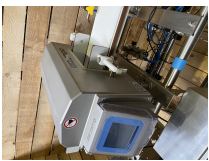
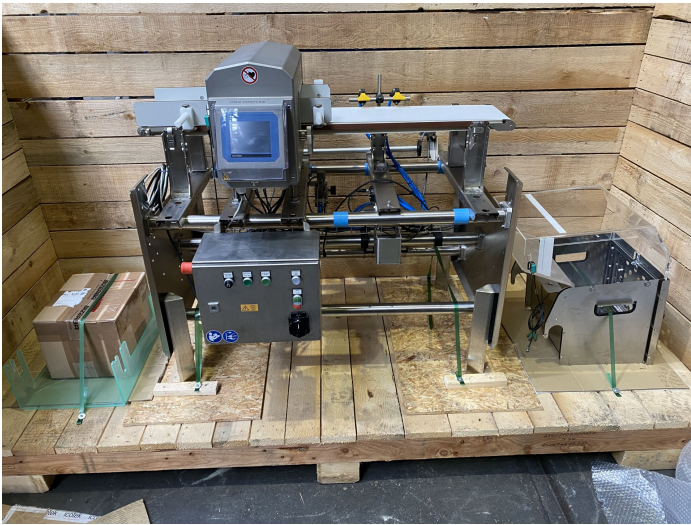


Overview

iMD pro MF

BIZERBA

Equipment number: 12199445



Description

The metal detector iMD pro with integrated conveyor contributes to your quality assurance in a reliable and flexible manner. With its robust design it is ideally suitable for the food sector. Rely on safe detection of enclosed contaminations such as steel, stainless steel or non-ferrous metals like aluminum for packaged products. The robust frame perfectly integrates in the Bizerba design. A particularly short metal-free zone ensures interference-resistant and reliable detection. The flexibly adjustable height of the metal detector guarantees optimal detection of contaminations. Thanks to the variable belt speed different products can be processed on just one production line. Moreover, conveying height and direction can be adapted to a new production line, if needed. Consequently there is no need for a new acquisition. For the event of contaminations, the system is fitted with a Stop-on-Detect function (SOD) or with a rejection system. The hygienic design and protection class IP65 allow easy and thorough cleaning.

Product information

Year of construction:	2022
Condition:	Refurbished acc. to Bizerba standard
Transport direction CWx:	right to left
Voltage variant:	240 V
Location:	Germany
Warranty:	6 month
Material number:	9090851 Metal Detector